

Relationships & Building a Community Focus

CITY OF BREMERTON



Our School Our Community (360) 473-1061



Why P-3 From A District Perspective?

- *The need to reach children prior to kindergarten*
- *The need to build a strong system of support, birth to third grade and beyond*
- *Critical period of development with*
- *Implications for teaching and learning*
- *Early Intervention and prevention*
- *We can't do it alone*



The Need



Only 4%!



School District & Community Partnership

CR Head Start/Early Head Start/ECEAP



Emmanuel Lutheran Childcare Center



Abundant Life



Crossroads Neighborhood Church:
Wonders of Learning
+ Preschool +



Agape



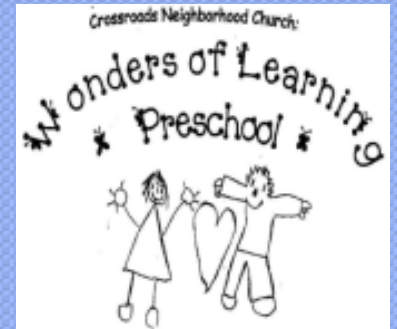
How?

Define Quality and Make a Commitment

Early Childhood Care & Education



A
Community
Working Together



Wonders of Learning Preschool

AND

Bremerton School District

Establish a P-3 Leadership Group

- Shared Leadership
- Common Goals
- Common Curriculum
- Shared Language
- Shared Resources
- Assessment Loop
- Aligned Instruction
and
Professional Development



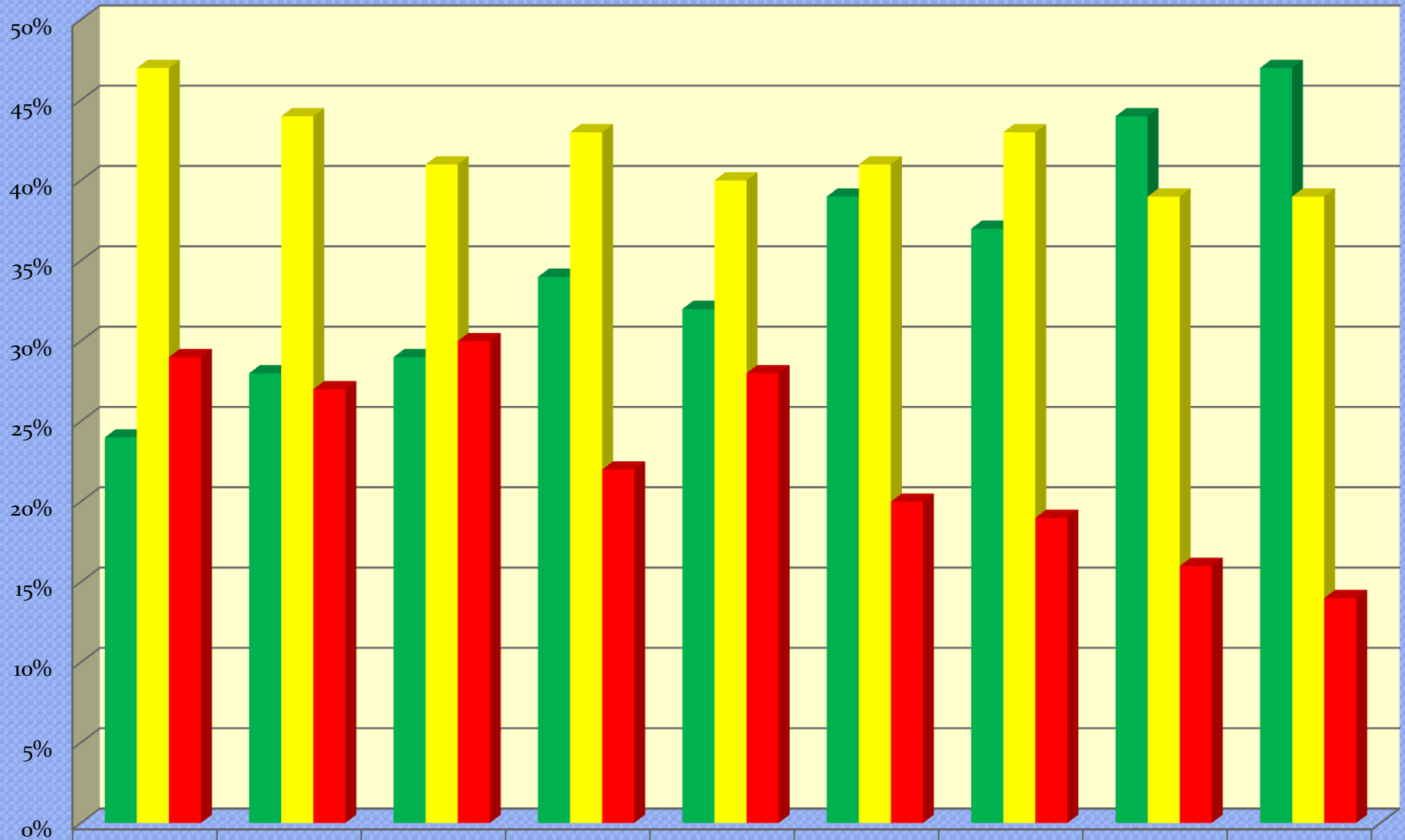
R
e
l
a
t
i
o
n
s
h
i
p
s



Multiple opportunities based
on the needs
of children and staff

Instructional Recommendation/DIBELS

Kindergarten: September Data



■ Benchmark	2001	2002	2003	2004	2005	2006	2007	2008	2009
■ Strategic	47%	44%	41%	43%	40%	41%	43%	39%	39%
■ Intensive	29%	27%	30%	22%	28%	20%	19%	16%	14%

Kindergarten Spring DIBELS Proficiency 2002, FDK 2006-2010

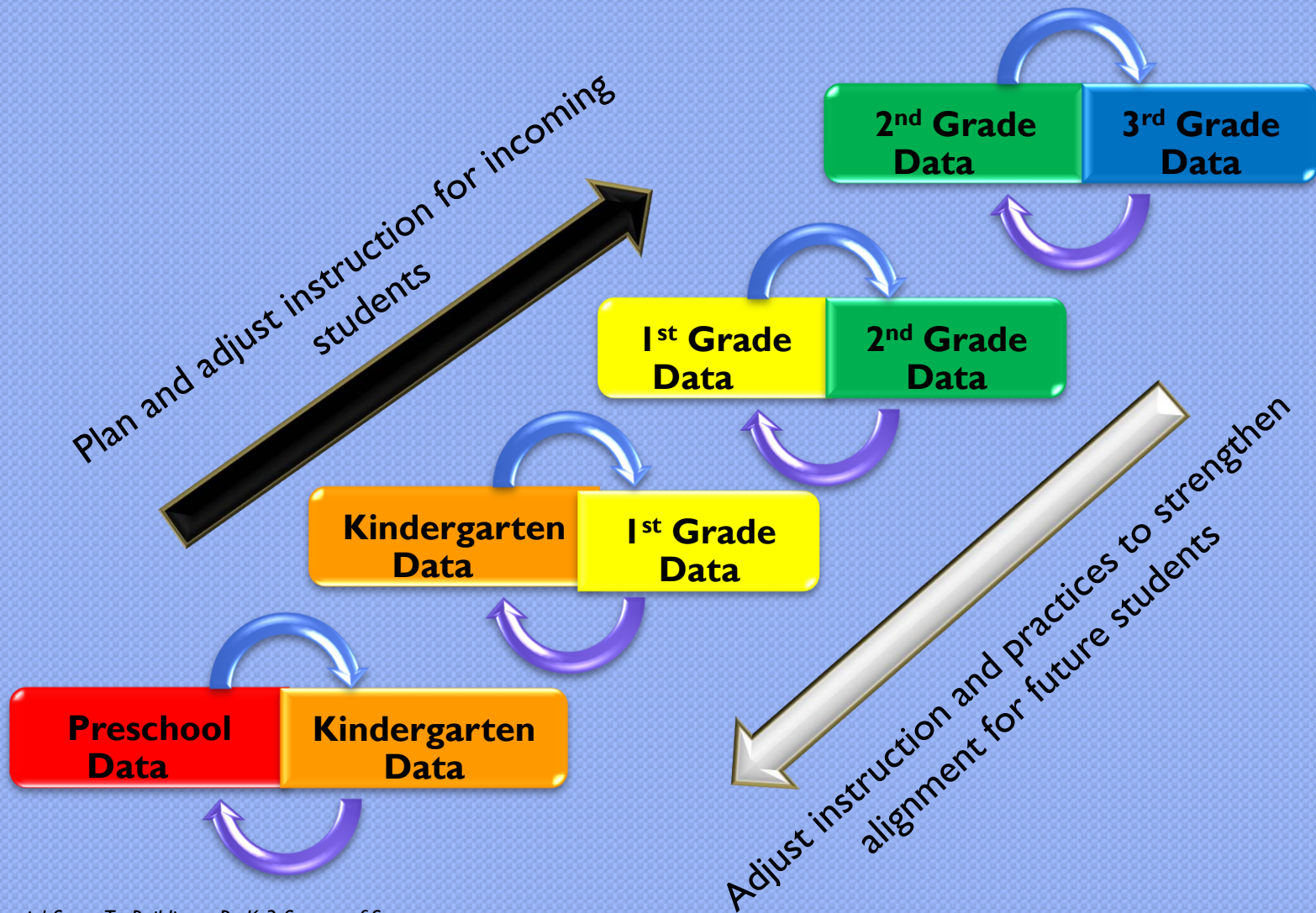
		Benchmark	Strategic	Intensive
May 2010	All Day Kgt	91.0%	5.3%	3.8%
May 2009	All Day Kgt	94.4%	3.6%	1.9%
May 2008	All Day Kgt	93.6%	4.4%	2.1%
May 2007	All Day Kgt	92.3%	5.9%	1.8%
May 2005	Extended Kgt 1/3 rd of our students	70.0%	23.7%	6.3%
May 2002	Early Childhood Partnerships & half day kgt	55.9%	31.5%	12.6%

Kindergarten Spring DIBELS Next Proficiency 2011

May 2011	All Day Kgt	Benchmark 80.6%	Strategic 13.4%	Intensive 5.9%
-----------------	--------------------	----------------------------------	----------------------------------	---------------------------------

Free Full Day Kindergarten for all Bremerton children

PreK-3 Assessment Loop, Learning Walks, and Alignment



Not Every Teacher is an Early Childhood (PreK-3) Teacher

- Quality counts!
- “Friendly accountability”
- Learning Walks

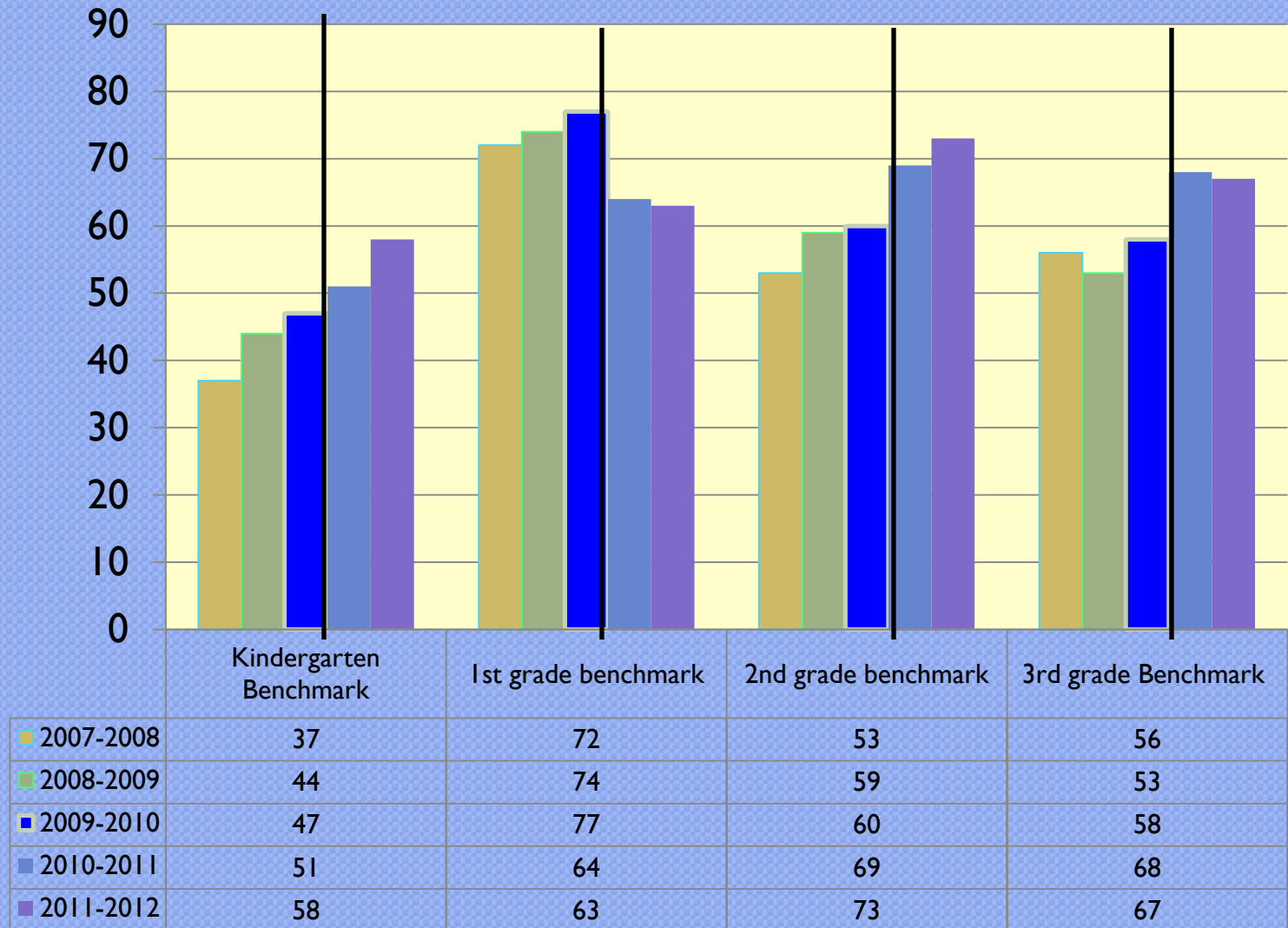


Aligning and Maximizing Resources

Head Start	Title I/LAP	Transitions	Summer Services
Early Head Start	Title II	Professional Development	Library
State ECEAP	Instructional Coach	Family Advocates and Interventionists	Child Care
Faith-Based Nonprofit	Special Education	Kitsap Mental Health Services	Parks and Rec
Special Ed B-3	Girls and Boys Club		ESY
Special Ed Preschool			Summer School
			Jump Start

September Benchmark DIBELS

DIBELS Next Instructional Recommendation/Composite P-3 Data



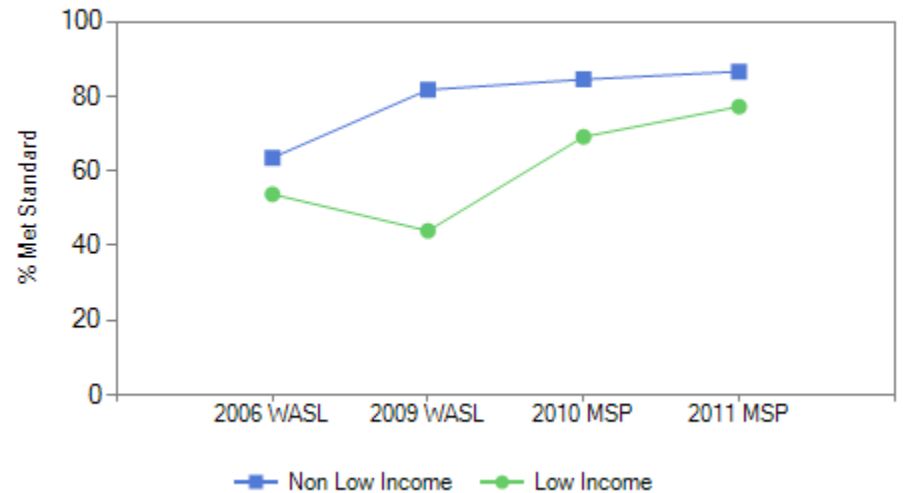
Building P-3, P-5 Schools



Naval Ave. Early Learning Center



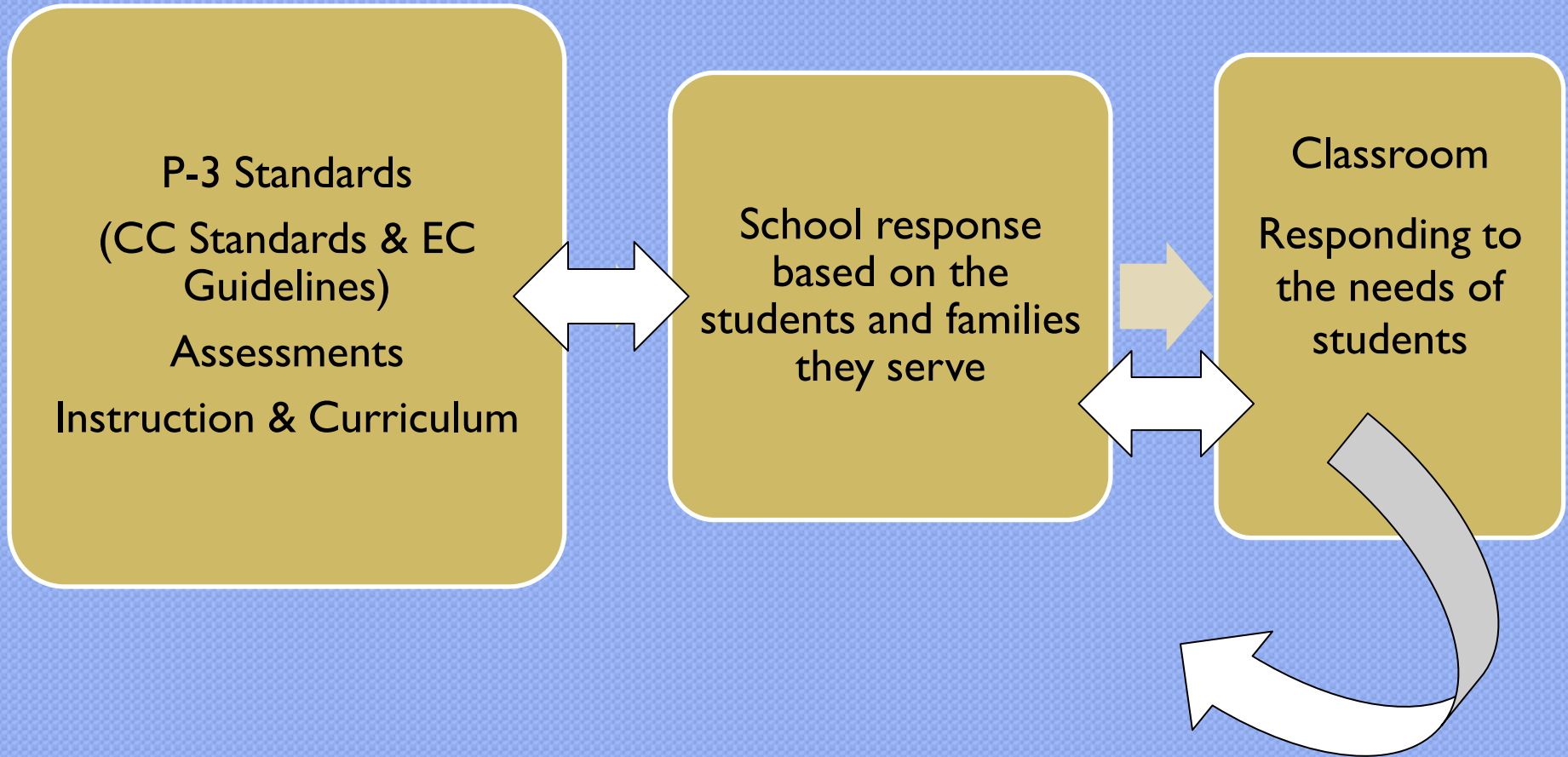
3rd Grade Reading Trend



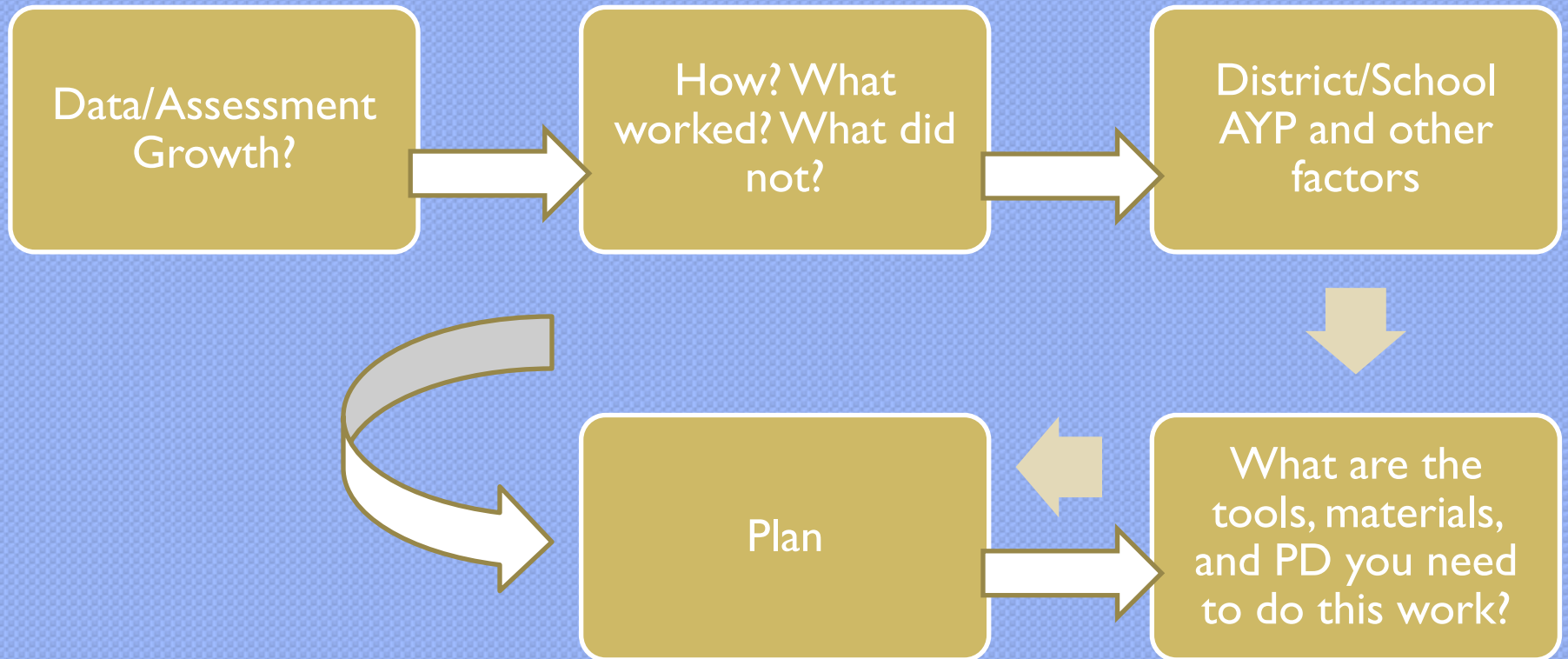
WA State Award for Closing the
Achievement Gap

Comprehensive District Improvement Planning: Framework & Flexibility

Professional Development & Maximizing Resources



CSIP Planning & Instruction



School Level

P-3 Principals & Leaders



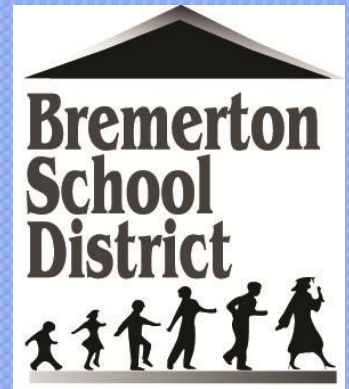


Dave Rubie

School Board Member

360.377.0340

dave.rubie@bremertonschools.org



Flip Herndon

Superintendent

360.473.1006

flip.herndon@bremertonschools.org



Linda Sullivan-Dudzic

Special Programs Director

360.473.1061

linda.sullivan@bremertonschools.org

Questions?



John Welsh

Principal, Naval Ave Early Learning Center
360.473.4406

john.welsh@bremertonschools.org



Kelli Leavell

ELL

360.473.1062

kelli.leavell@bremertonschools.org



Donna Gearns

Preschool TOSA
360.473.1064

donna.gearns@bremertonschools.org



Jill Brenner

Child Development Manager

Kitsap Community Resources

360.473.2097

jbrenner@kcr.org